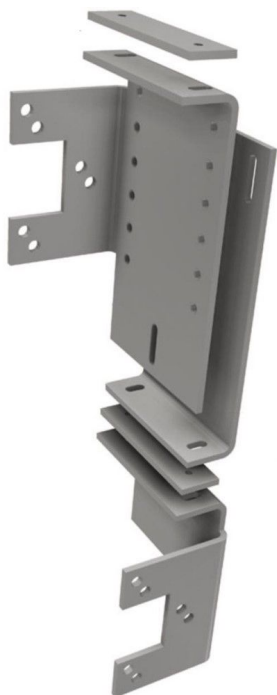


Overview

Ridder Mounting plate RSD\105\E\H340-495 - for motor gearbox RW240/400/600-RSD250 - von 340-495 mm

Product number: 32050501





TGU GmbH & Co. KG

Joseph-Monier Str. 2 48268
Greven

Tel.: 02575 - 955 87 0 Fax:

02575 - 955 87 87 email:
info@tgu-greven.com

HandelsregisterAmtsgericht

Steinfurt, HRB 31 56

Gerichtsstand Steinfurt

Erfüllungsort Greven DE

125 543 036

Description

The vario-motor mounts enable you to flexibly attach your gear motors within the area of the truss in greenhouses. Thanks to a variable hole pattern the motor mount can be positioned at different heights of the truss.

This component can be used in greenhouses with central drive and with gable end drive.

Material: Galvanized steel

Ridder Art.-Nr. 503500

Erstellt am 14.03.2025.

Dieses Dokument stellt kein Angebot da. Es gelten die aktuellen Preise im Online-Shop.

* Our offers are directed exclusively to companies. We do not conclude contracts with consumers. All prices excl. VAT plus shipping costs and possible delivery charges, if not stated otherwise.