

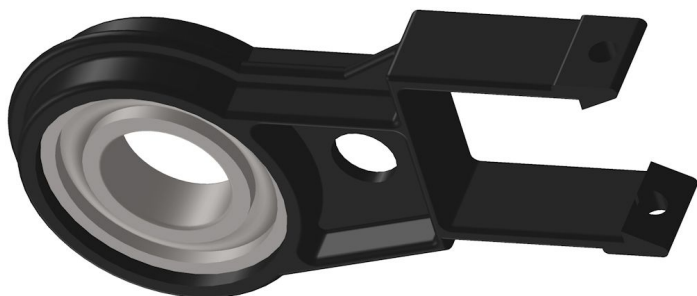
Overview

Offset bearing 1" - 50/50 - PU = 25 pcs

Product number: 21050050

Options

PU (Pcs)



Description

This offset bearing has been developed for suspended shading systems with gable end drive. It brings the drive shaft to an optimal position and as a support point enables its rotation. The product has been built to hold trailing load.

Material: High impact resistant plastic

Erstellt am 24.04.2025.

Dieses Dokument stellt kein Angebot da. Es gelten die aktuellen Preise im Online-Shop.

* Our offers are directed exclusively to companies. We do not conclude contracts with consumers. All prices excl. VAT plus shipping costs and possible delivery charges, if not stated otherwise.



TGU GmbH & Co. KG
Joseph-Monier Str. 2 48268
Greven

Tel.: 02575 - 955 87 0 Fax: 02575 - 955 87 87
email: info@tgu-greven.com

HandelsregisterAmtsgericht
Steinfurt, HRB 31 56
Gerichtsstand Steinfurt
Erfüllungsort Greven DE
125 543 036

For mounting you will need the following parts:

- M 8 x 70 bolt
- M8 nyloc nut

Erstellt am 24.04.2025.

Dieses Dokument stellt kein Angebot da. Es gelten die aktuellen Preise im Online-Shop.

* Our offers are directed exclusively to companies. We do not conclude contracts with consumers. All prices excl. VAT plus shipping costs and possible delivery charges, if not stated otherwise.