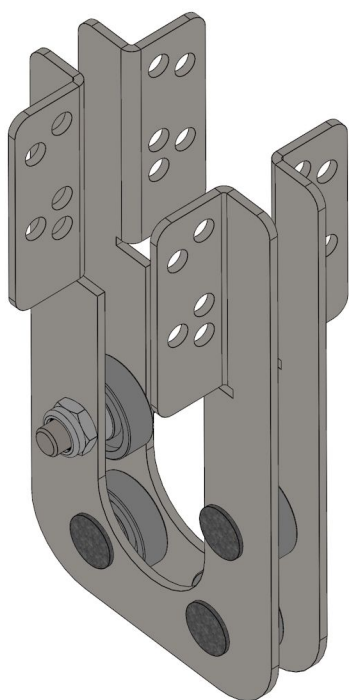


## Overview

# 4 bearing shaft support 1" vertical - Gable drive - PU = 20 pcs

**Product number:** 25100112



### Options

#### PU (Pcs)

1

20

## Description

Our vertical bearing shaft supports 1" allows to set the drive shaft as close as possible to the gable end. In such a construction the shading screens do not set against the truss, but lay either over( in suspended system) or below ( in lay- flat system) the square tube, covering the whole area up to the gable end. The delay of screens is basically not needed.

The drive shaft can easily and quickly be pre-assembled on the ground. So dangerous, time-consuming works underneath the roof can be avoided.

The bearings are attached onto the square tubes and locked with locking screws. If needed, they can be moved

Erstellt am 24.04.2025.

Dieses Dokument stellt kein Angebot da. Es gelten die aktuellen Preise im Online-Shop.

\* Our offers are directed exclusively to companies. We do not conclude contracts with consumers. All prices excl. VAT plus shipping costs and possible delivery charges, if not stated otherwise.