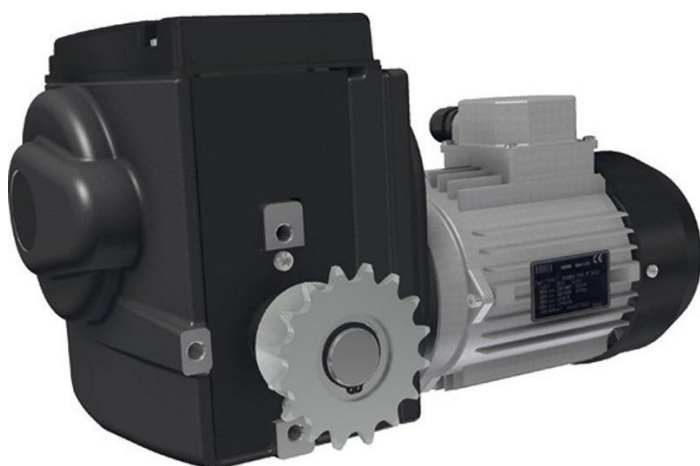


## Overview

# Motor gearbox RW 405 - 400-450 Volt - 3 Phase / 5,0 rpm - Ridder Art.-Nr.: 502220

**Product number:** 32535380



## Description

Erstellt am 14.03.2025.

Dieses Dokument stellt kein Angebot da. Es gelten die aktuellen Preise im Online-Shop.

\* Our offers are directed exclusively to companies. We do not conclude contracts with consumers. All prices excl. VAT plus shipping costs and possible delivery charges, if not stated otherwise.



TGU GmbH & Co. KG  
Joseph-Monier Str. 2 48268  
Greven

Tel.: 02575 - 955 87 0 Fax:  
02575 - 955 87 87 email:  
info@tgu-greven.com

HandelsregisterAmtsgericht  
Steinfurt, HRB 31 56  
Gerichtsstand Steinfurt  
Erfüllungsort Greven DE  
125 543 036

Ridder Art.-Nr.: 502220

Erstellt am 14.03.2025.

Dieses Dokument stellt kein Angebot da. Es gelten die aktuellen Preise im Online-Shop.

\* Our offers are directed exclusively to companies. We do not conclude contracts with consumers. All prices excl. VAT plus shipping costs and possible delivery charges, if not stated otherwise.