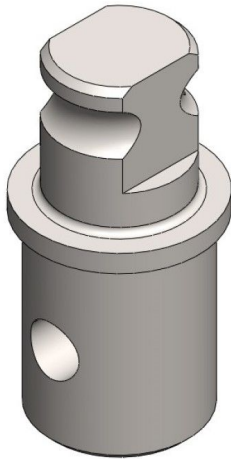


Overview

Adaptor - Tube 27 x 1,5

Product number: 24100405



Description

This adaptor is used in telescopic systems to connect built in U-joint and steel tubes.

It fits 27 mm tubes with a wall thickness of 1,5 mm.

It is a perfect solution for TGU TransAxle Unit as well as for single and double U-joints.

Material: Galvanized steel

Erstellt am 24.04.2025.

Dieses Dokument stellt kein Angebot da. Es gelten die aktuellen Preise im Online-Shop.

* Our offers are directed exclusively to companies. We do not conclude contracts with consumers. All prices excl. VAT plus shipping costs and possible delivery charges, if not stated otherwise.