

Overview

Adaptor extended - Tube 27 x 1,5 galvanized

Product number: 24100406

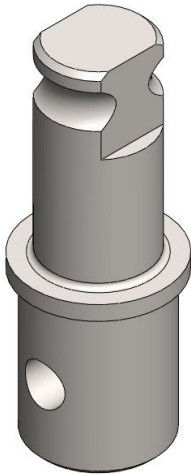


Image not found or type unknown

Description

This adapter is inserted in telescopic system to connect built-in U-joint and the steel tubes. The extended version allows to use a spacing roller like it is used, for example, in TGU TransAxle Unit.

It fits 27 mm tubes with a wall thickness of 1,5 mm.

It is a perfect solution for TGU TransAxle Unit as well as for single and double U-joints.

Material: Galvanized steel

Erstellt am 24.04.2025.

Dieses Dokument stellt kein Angebot da. Es gelten die aktuellen Preise im Online-Shop.

* Our offers are directed exclusively to companies. We do not conclude contracts with consumers. All prices excl. VAT plus shipping costs and possible delivery charges, if not stated otherwise.