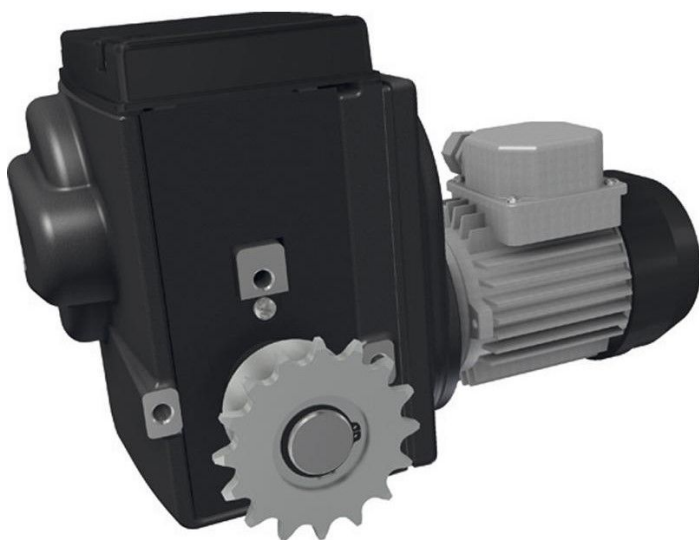


## Overview

# Motor gearbox Ridder RW 241-09/400/3/86//IP55

Product number: 32035227



## Description

Ridders' electronic gear motors for shading and ventilation systems have pre-installed chain wheels, which work as a receptacle for the chain coupling.

Ridder Art.-Nr. 537200

Erstellt am 18.03.2025.

Dieses Dokument stellt kein Angebot da. Es gelten die aktuellen Preise im Online-Shop.

\* Our offers are directed exclusively to companies. We do not conclude contracts with consumers. All prices excl. VAT plus shipping costs and possible delivery charges, if not stated otherwise.