

## Overview

# Tube connectors halves 1" - incl. 4 bolts M8 x 45 - PU = 25 Sets

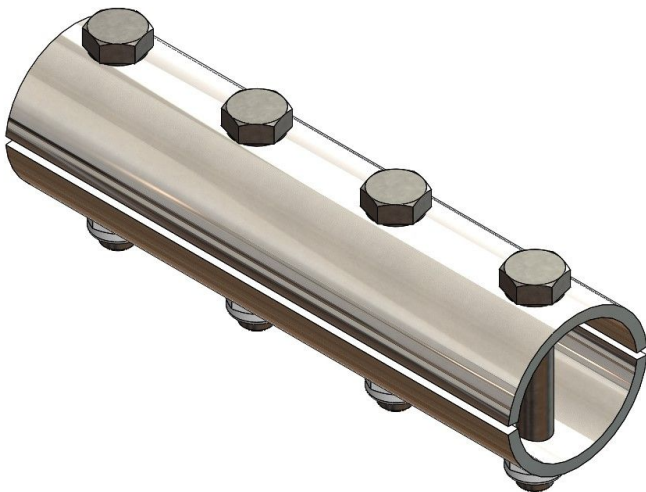
Product number: 03032645

### Options

#### PU

1

25



## Description

These tube connector halves are used for reliable connection of 34 mm steel tubes for drive shafts. Compared to heat-welded connection our tube connector halves offer higher stability and durability.

The connector halves are bolted to the steel tubes with the included M8x50 bolts.

Erstellt am 24.04.2025.

Dieses Dokument stellt kein Angebot da. Es gelten die aktuellen Preise im Online-Shop.

\* Our offers are directed exclusively to companies. We do not conclude contracts with consumers. All prices excl. VAT plus shipping costs and possible delivery charges, if not stated otherwise.



TGU GmbH & Co. KG  
Joseph-Monier Str. 2 48268  
Greven

Tel.: 02575 - 955 87 0 Fax:  
02575 - 955 87 87 email:  
info@tgu-greven.com

HandelsregisterAmtsgericht  
Steinfurt, HRB 31 56  
Gerichtsstand Steinfurt  
Erfüllungsort Greven DE  
125 543 036

Material: Steel, galvanized

Erstellt am 24.04.2025.

Dieses Dokument stellt kein Angebot da. Es gelten die aktuellen Preise im Online-Shop.

\* Our offers are directed exclusively to companies. We do not conclude contracts with consumers. All prices excl. VAT plus shipping costs and possible delivery charges, if not stated otherwise.